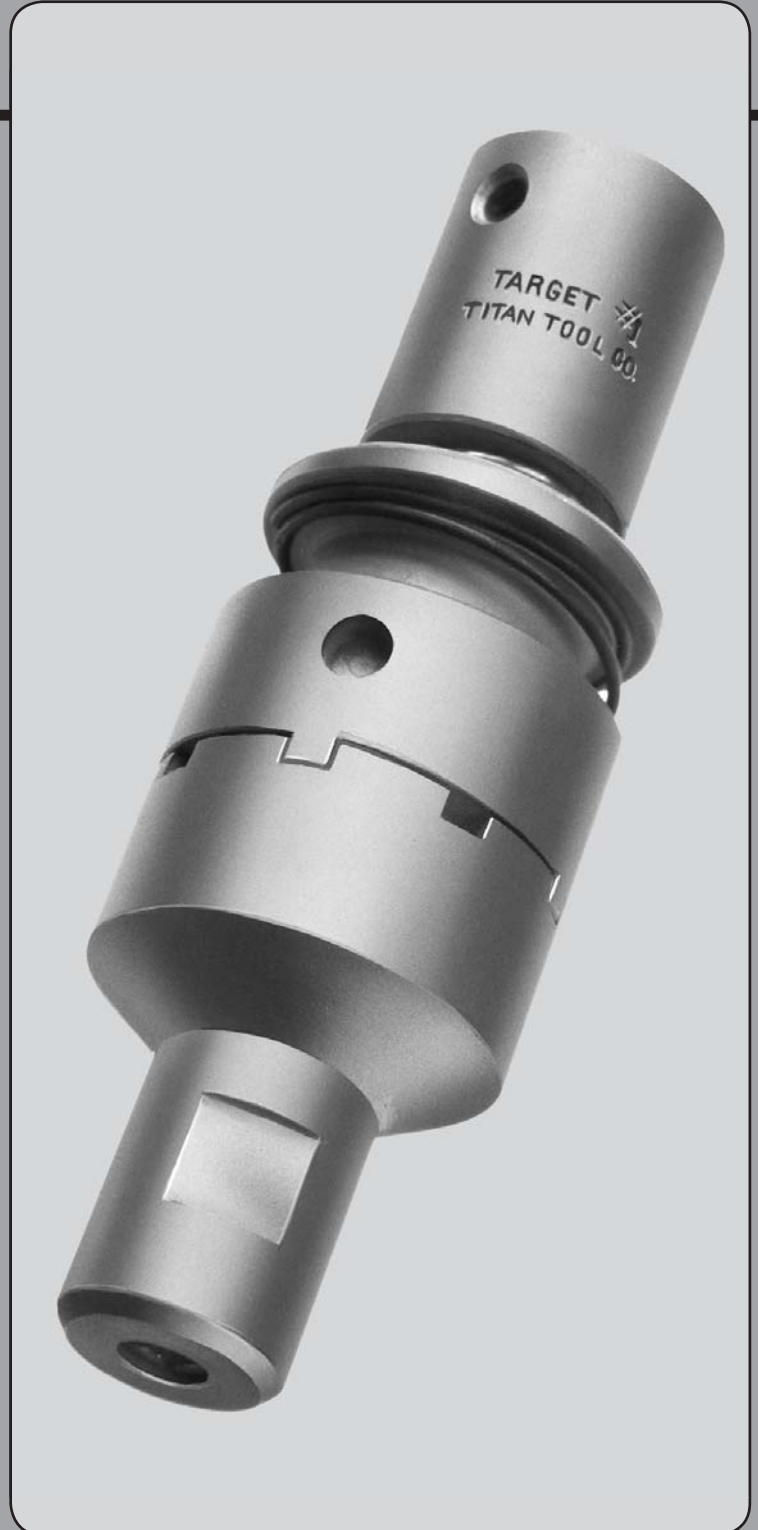


TITAN TARGET[®] STUD DRIVER

- Ideal for hand held applications
- Can be used with many power tools other than impact
- Engineered for the aircraft industry
- For accurate stud projection height
- Takes pressure off the top of the stud to eliminate stretching and distorting threads
- Available in three sizes

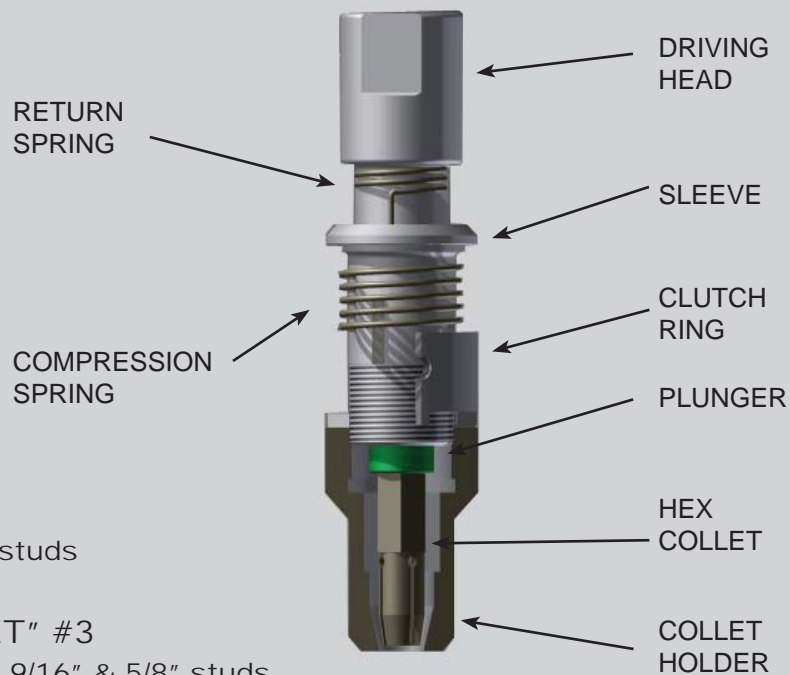


TITAN TARGET® STUD DRIVER

"TARGET" #1
for #10, 1/4" & 5/16" studs

"TARGET" #2
for 5/16", 3/8" & 7/16" studs

"TARGET" #3
for 7/16", 9/16" & 5/8" studs



The TITAN TARGET® Hex Collet Stud Driver drives the stud by **pitch diameter** pressure instead of pressure on the **top of the stud**. This method completely eliminates mutilation and stretching of the stud threads, and distortion of the cotter key holes.

Accurate stud projection height can be easily maintained by using a spacer plate between the stud driver and the casting. Various reversing machines may also be used in conjunction with micro reversing switches

The TITAN TARGET® can be adjusted for various lengths of grip on the stud simply by lifting the clutch ring and screwing the collet holder farther onto the sleeve for a shorter grip, or farther off the sleeve for a longer grip. This adjustment is in small increments and cannot move after lowering the clutch ring back into the collet holder. This method also permits the easy changing of collets by lifting the clutch ring and screwing the collet holder all the

way off the sleeve, after which the collet can be freely removed from the holder.

The TITAN TARGET® has the famous TITAN BALL BEARING COLLET RELEASING MECHANISM (exclusively Titan) which effects release of the collet with a fraction of the torque necessary with other methods. Reversing the motive power causes the driving head to move upward as well as backward, thus releasing pressure on the collet and freeing the stud.

The TITAN TARGET® is furnished with either a 1/2" female square for mounting on air drills or with a 5/8"-16 female thread in top of driver. A Morse taper shank can be furnished in a 1/2" square drive. Where it is desired to use the TITAN TARGET® as a hand tool, T HANDLES are available with either a 3/8" square drive or 1/2" square drive.

CAUTION: The return spring must be wound so that there is clockwise tension on driving head



TITAN® TOOL COMPANY, INC.

7410 West Ridge Road • P.O. Box 220 • Fairview, PA 16415

Phone (814) 474-1583 • FAX (814) 474-5337 • Email: titan@titantoolco.com